

NEW

PRODUCT

WEBINAR



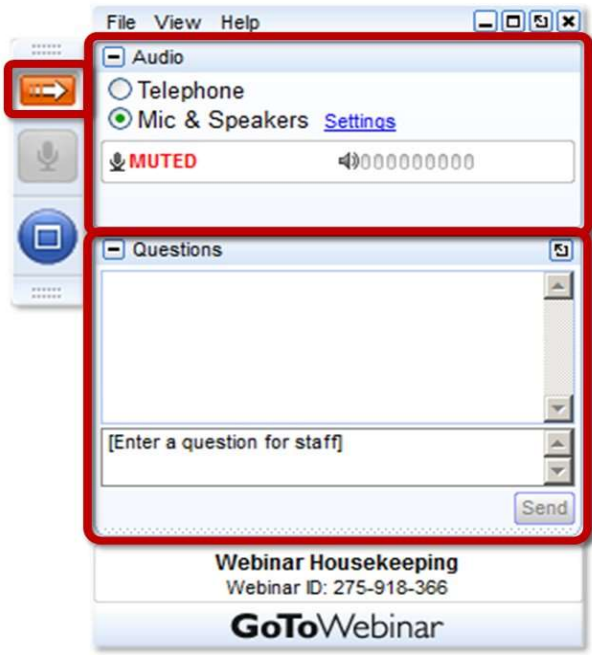
May 2018

2018 Conference tickets almost sold out!

EN 18 EMPLOYEE NAVIGATOR CONFERENCE

- Conference is June 13-15 in Washington DC
- Expecting 700+ attendees and 35+ partners
- More open forum discussions among brokers
- New sessions on payroll, TPA and carrier integrations
- Revamped tracks for beginner and advanced users





Questions?

Our Product team and QA are on the call

Presenters

Amy Meyer
HRIS

Katherine Heinsen
Partner Solutions

Amy Crouse
Benefits

Rose Bulbula
3rd Party Apps



Agenda

1. Welcome

2. HRIS features

- Highly Requested Feature Enhancements
- User Experience Updates

3. Benefits

- Default Eligibility Rules
- Updates to Pending Enrollments
- Support for Adjust FSA after a Qualifying Life Event
- Support for Dependent Only COBRA

4. Integrated Payroll

- New Payroll Reports
- HRIS Requirements for Integrated Groups

5. 3rd Party Apps

- Aflac Everwell Integration
- New Enroller Experience

6. What's Next?!?



HRIS



HRIS



-
- Surfaced HR User access to classes on user profile
 - Policy # required on plans when generating Universal Enrollment forms
 - New Ad-hoc report configuration page
 - “Dismiss all” tool added to Onboarding application

BENEFITS



Benefits



-
- Company Default Eligibility Rules
 - Improved the process for managing pending enrollments
 - Enhanced the “Not Finished New Hire” report
 - Added options to Adjust FSA and LPFSA to Life Event processing
 - Added support for Dependent only COBRA enrollments

INTEGRATED PAYROLL



Integrated Payroll



- Added the Retroactive Deduction Adjustment Audit Report
- Added the Retroactive Deduction Changes Report
- Updated HRIS settings to hide Payroll ID when integrated with a payroll vendor

3rd PARTY APPS



3rd Party Apps



- Aflac Everwell Integration
- New Enroller Experience



Coming Soon...and it will be great!

PTO

- Submit time off requests on weekends
- Configure company specified hours per workday (no more 8 hour requirement!)

- OR -

- Designate employee workdays as variable hour; remove the full day default



WHAT'S
NEXT?

Questions?

